



OCEAN FASTRADE SDN. BHD.

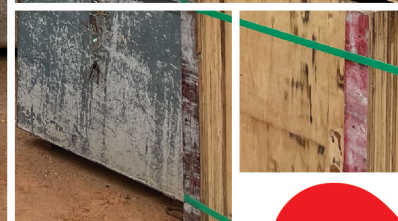
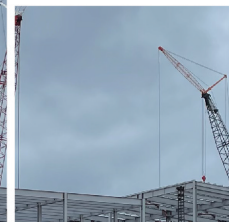


2025 / / 26

# COMPANY PROFILE



# ABOUT



# US

**Ocean Fastrade Sdn. Bhd.** is a professional fastener supplier supplying our brand products "Ocean-Pro" with the best quality. The company is located in Kepong Industrial Zone, Kuala Lumpur. It is committed to providing high-efficiency and quality guaranteed products and services. The company implements a diversified sales model which includes online, offline, and brand agents to provide information and quality goods.

The company has expanded its product variety which includes roofing fasteners, anchoring systems, shear studs, formwork systems, and accessories in recent years. Besides, it is also providing construction services for customers such as centralised labour quarter (CLQ), floor decks, and shear stud welding services. It is committed to improving the "Ocean-Pro" brand image and continues to provide reliable solutions to our valuable customers.

## Our Mission,

Ocean's mission is to provide excellent services, quality products, honest business practices, and on-time delivery to satisfy our customers' needs and wants.

## Vision

Ocean's vision is to focus on the continuous development and growth of the company to be the most successful fastener supplier in the industry.

## & Value

### **Integrity:**

We are committed to conducting our business with the highest level of integrity and fairness. This promotes trust and reliability with our employees, customers, business partners, and the community.

### **Customer Focus:**

We view customers as our highest priority. This focus drives decisions at every level.

### **Passion:**

Our employees and representatives have a passion for fasteners; we are driven by customer service and customer success.

### **Reliability:**

Ocean Fastrade Sdn Bhd has a long tradition of keeping commitments; when we give our word, we mean it.

### **Professionalism:**

Our employees and representatives have the experience and competency to operate at the highest level; we are professional in all we do.

### **Employee Investment:**

We invest in our employees; we are committed to their well-being and quality of life.

### **Culture:**

We encourage teamwork by enthusiastically creating opportunities for employees to be involved in our pursuit of excellence.

### **Respect:**

We listen and respond to the diverse opinions of our employees, customers, and business partners.



# DEVELOPMENT

# PRODUCTS

# PRESENT

**Product Variety continues to grow which includes anchoring systems and accessories. The company also start providing floor decks installation and cetralised labour quarters (CLQ) services to construction site. The company plans to continuous development and expand its new warehouse.**

# OUR

## 2017

**Start providing construction services to our customers, and supply our shear stud welding services to all parts of the country.**

# 2014

Expand its product variety by start introducing formwork system to our customers. Our roofing screws have been sold all over the country.

## 2011

The company began to expand its warehouse, increasing the inventory and upgrading its product packaging. “Ocean-Pro” brand was officially born.

## 2008

**Ocean Fastrade Sdn. Bhd. was founded in 2008. The company mainly supplies roofing fasteners for its customers.**

# PROCESS

The company has partnered with international fastener coatings specialists to provide Extra Performance coating systems for our customers. "Ocean-Pro" products include self-drilling fasteners, anchoring systems, chemical anchors, shear studs, formwork systems, and accessories.





DECK

FLOOR

DEXCOM  
PENANG

HOSPITAL  
KL

CENTRALISED LABOUR  
QUARTER

# OUR SERVICE

SHEAR

ARKADIA  
LINKBRIDGE

STUD

LRT 3  
JOHAN  
SETIA  
DEPOT

KL  
SIGNATURE  
TOWER

HONOR

## Certificate of Honor

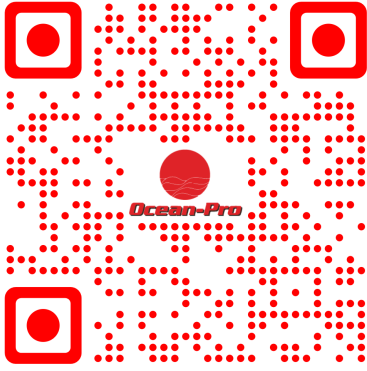
*This is to certify that*  
*Ocean Fastrade Sdn Bhd*  
joins hand by hand together with  
**CHINA STATE CONSTRUCTION ENGINEERING (M) SDN. BHD.**  
**KUALA LUMPUR SIGNATURE TOWER PROJECT**

Good construction progress and quality of the  
Installation for the metal deck and welding for the shear stud.

Managing Director

中国建设马来西亚有限公司  
CHINA STATE CONSTRUCTION ENGINEERING (M) SDN. BHD.





# STAY CONNECTED WITH US

Email // [oceanprossj@gmail.com](mailto:oceanprossj@gmail.com)  
// [oceanptw@gmail.com](mailto:oceanptw@gmail.com)  
Tel // 03 6242 6639  
Hp // 012 222 7995  
Website // <https://oceanfastrade.com/>

88, JALAN METRO PERDANA BARAT 13,  
SRI EDARAN INDUSTRY KEPONG, 52100  
KUALA LUMPUR